



GPO Box 3366 Melbourne, 3001 ☎ 0411 244 969 📠 03 9885 1877
email: 1314profly@militaryandlaw.com.au

PNP-Mi Miniature, Lightweight, Ruggedised Night Vision Device

The PNP-Mi is a powerful, multi-purpose pocket-sized monocular night scope. The NVD is designed to be used either as a stand-alone night vision device or in combination with a wide variety of camcorders, still & digital photography, CCTV equipment and spotting scopes.

For more info: [CLICK HERE](#)



PNP-MCi Miniature, Lightweight, Ruggedised Night Vision Device With Interchangeable 'C' Mount Lenses

The PNP-MCi range is an image intensifier mini monocular night scope incorporating the latest technologies in a compact robust moulded glass filled polymer lightweight body **with interchangeable 'C' mount objective lenses**.

With the PNP-MCi's interchangeable lens feature, standard photographic equipment can be quickly turned into a powerful, effective night-time device, dramatically enhancing your intelligence gathering and observation capability.

PNP-MCi is a powerful, multi-purpose pocket-sized monocular night scope. The pocket scope is designed to be used either **as a stand-alone night vision device or in combination with a wide variety of standard video, still & digital photography, CCTV equipment and spotting scopes**.

Built to Military Specifications -
NATO STOCK NUMBER: 5855-99-855-1401

For more info: [CLICK HERE](#)



NEW

Both the PNP-Mi & the PNP-MCi uniquely feature:

*A 75mW IR illuminator - 4x more powerful than all other NVD's map reading illuminators. The additional invisible 830nm IR illumination provides up to 20m of unseen 'to the naked eye' luminosity – a critical tactical advantage! A red LED in the eyepiece illuminates when the IR illuminator is on as does a yellow LED when a low battery state occurs.

*A proprietary in-built 'safety photo sensor' which prevents accidental operation during daylight by terminating power to the Image Intensifier Tube, which otherwise would typically irreparably damage the Tube. This protection, of course, does not activate in the darkness in the case of bright flashes, vehicle headlights even at short distances, nor in street lighting or inside illuminated confines.

www.militaryandlaw.com.au



GPO Box 3366 Melbourne, 3001 ☎ 0411 244 969 📠 03 9885 1877
email: 1314profly@militaryandlaw.com.au

MNV-K & MNV-S Night Vision Devices



MNV-K



MNV-S

Lightweight handheld monoculars weighing a mere 300g (MNV-K) & 250g (MNV-S)

Adaptable to cameras and camcorders for imaging applications and easily utilised with head & helmet mounted fixtures.

Operating mode switch and batteries compartment cover are easily accessed even when operating with gloves.

Angle of IR illumination totally assures uniform field of view radiance.

The monocular body is corrosion resistant & powered by either a single AA or CR123 battery.

'Low battery' and 'IR-on' indicators are displayed in the user's field of view.

MNV-K utilises high quality f.1.2 optics ideally suited to image gathering & available with 'screw-on' 3x & 5x objective lenses and additionally a 3x afocal attachment 'snap-on' objective lens.

Both NVD's are available with the following unique Image Intensifier Tube options-

- **FOM1600**
 - GATED: none or auto, GAIN: manual or auto, OUTPUT: green or B&W options
- **FOM1800**
 - GATED: none or auto, GAIN: manual or auto, OUTPUT: green or B&W options
- **FOM2000**
 - GATED: none or auto, GAIN: manual or auto, OUTPUT: green or B&W options
- **FOM2300**
 - GATED: none or auto, GAIN: manual or auto, OUTPUT: green or B&W options

For more info: [CLICK HERE](#)

For more info: [CLICK HERE](#)



GPO Box 3366 Melbourne, 3001 ☎ 0411 244 969 📠 03 9885 1877
email: 1314profly@militaryandlaw.com.au

PNG-M Miniature, Lightweight Night Vision Goggles



PNG-M night vision goggle system is a compact ultra-lightweight, high resolution twin eyepiece device incorporating superior optics. The unit is supplied with a head mount complete with auto off/auto on flip up capability and is easy to use, requiring only one standard "AA" size battery.

The in-built 'safety photo sensor' prevents accidental operation during daylight by terminating power to the Image Intensifier Tube, which otherwise, would typically irreparably damage the Tube. This protection, of course, does not activate in darkness in the case of bright flashes, vehicle headlights even at very short distances, nor in street lighting or inside illuminated confines.

The PNG-M employs a choice of image intensifier tubes characterized by high resolution and a clear, bright image including autogated types.

The unit is supplied with a head mount complete with auto off / auto on flip up capability and is easy to use, requiring only one standard "AA" size battery.

The PNG-M series of goggles meets the night vision needs of military & law enforcement forces around the globe, utilising the very latest in Image Intensifier Tube technology and is available with a wide range of accessories.



For more info: [CLICK HERE](#)

ONV-I Lightweight Night Vision Goggles



Operating mode switch and batteries compartment cover are easy to use even when operated in gloves.

"Low battery" and "IR-on" indicators are displayed in the user's field of view

Available with 3x & 5x screw on magnifying lenses and 3x afocal snap-on attachment lens

Optional: Auto off function when flipped-up extends battery life and provides greater concealment and lower detection capability by eliminating greenish or white gleam on the operator's face

Available in FOM1600, FOM1800, FOM2000 & FOM2300, none or auto-gated, manual or auto-gain, green or B&W output.

For more info: [CLICK HERE](#)

www.militaryandlaw.com.au



GPO Box 3366 Melbourne, 3001 ☎ 0411 244 969 📠 03 9885 1877
email: 1314profly@militaryandlaw.com.au

MNV-K & MNV-S Dual Tube Night Vision Goggles/Binoculars



MNV-K



MNV-S

'Low battery' and 'IR-on' indicators are displayed in the user's field of view.

Utilise high-quality IR illumination which covers the entire field of view

Corrosion-proof and water-proof design

Multifunctional: hand-held, head-mounted or helmet mounted as a dual tube goggle or separated as individual monoculars

Optional: Auto off function when flipped-up extends battery life and provides greater concealment and lower detection capability by eliminating greenish or white gleam on the operator's face

Powered by either a single AA or CR123 battery

The MNV-K dual tube NVG's weigh 684 grams with batteries installed

The MNV-S dual tube NVG's weigh 629 grams with batteries installed

Both NVD's are available with the following unique Image Intensifier Tube options-

- **FOM1600**
 - GATED: none or auto, GAIN: manual or auto, OUTPUT: green or B&W options
- **FOM1800**
 - GATED: none or auto, GAIN: manual or auto, OUTPUT: green or B&W options
- **FOM2000**
 - GATED: none or auto, GAIN: manual or auto, OUTPUT: green or B&W options
- **FOM2300**
 - GATED: none or auto, GAIN: manual or auto, OUTPUT: green or B&W options

For more info: [CLICK HERE](#)

For more info: [CLICK HERE](#)

GPO Box 3366 Melbourne, 3001 ☎ 0411 244 969 📠 03 9885 1877
email: 1314profly@militaryandlaw.com.au



**AstroScope 9350
Nikon Configuration**



**Central Intensifier
Unit situated between
'front' & 'back' pairs**



**AstroScope 9350
Canon XL Configuration**

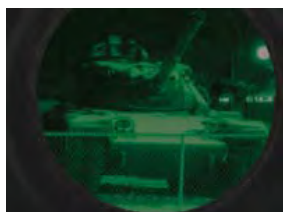
**AstroScope
9350
Night Module**

The AstroScope 9350 Night Vision Module system is Optimised for Low Light Imaging applications providing Extremely High Resolution images in the darkest of conditions:

The benefits of the 9350 Modular system include but are not limited to –

- **No image vignetting** on the majority of SLR platforms.
- Utilise a **super-fast F/1.2 relay optic** which provides you with an **overall 10 – 12 F-stop light gathering performance**.
- **Crisper, sharper & cleaner images without the typical "roll-off"** at the edges.
- **Maintains** the use of the **original host camera's objective lenses** to uphold extremely high resolution imaging.
- **Maintains** the benefits the host camera's features such as:
 - Nikon's "G" series lens compatibility
 - **Retains image stabilisation** facility - VR/vibration reduction (where available)
 - Electronic zooming function (where available)
 - No backfocus required
 - Utilised extensively by the Australian government.
- **NATO STOCK NUMBER:** 6760-10-527-6366.

Pocketscope



**AstroScope 9350
Night Vision Module**



Unlike pocketscope-based night vision setups, AstroScope delivers the sharpest detail and the highest quality full-frame images with no vignetting on most platforms.

For more info: [CLICK HERE](#)



GPO Box 3366 Melbourne, 3001 ☎ 0411 244 969 📠 03 9885 1877
email: 1314profly@militaryandlaw.com.au

PNP-MTHDE Miniature Thermal Imaging Monocular WITH 32GB DVR Recording



The PNP-MTHDE is the world's smallest and lightest thermal imaging monocular.

State of the art world beating 640 x 480 pixel array, High Definition, 17 micron pixel pitch, **25Hz** refresh rate piece of kit which is complemented by a wide range of specially developed accessories enabling the user to perform a huge variety of missions based on just one sensor platform.

32GB DVR providing up to 120hrs of 25fps recording.

Hand held, helmet or head mountable with a variety of clip-on magnification Germanium lenses.

The unique 'Near Eye OLED' display always produces a large crisp image right in front of the eye and overcomes the 'tunnel vision' problem common in inferior designs.

Utilising an advanced OLED 852 x 600 pixels SVGA, Monochrome display, the 32GB Digital Video Recorder (DVR) powered up only when required to conserve power, recording at 25fps with capacity for up to 120 hours

Controls include On/Off, Polarity White hot/Black hot, Electronic zoom 1x 2x and 4x ratio, Screen brightness, Automatic flip up / switch off, flip down /, switch on when used on helmet.

Camera & camcorder mountable for image gathering.

The 17mm, 25mm or 35mm lens versions accept the optional 3x rapidattach magnifier lens which produces 3x, 4.5x and 6x basic optical magnification respectively for the three models in addition to the inbuilt 2x and 4x digital zoom function incorporated as standard.



For more info: [CLICK HERE](#)

www.militaryandlaw.com.au

GPO Box 3366 Melbourne, 3001 ☎ 0411 244 969 📠 03 9885 1877
email: 1314profly@militaryandlaw.com.au

COTI Small Clip-On Thermal Imager



The COTI small clip on thermal imager provides a 'thermal overlay' for NVD's & NVG's.

- Improve visibility in no/low-light situations including smoke & dust conditions
- Detect thermal sources
- See through basic camouflage
- See into dark openings such as windows and doorways
- Detect residual heat: see if people have been in a room or vehicle used recently
- Economical & convenient
- Find people in search-and-rescue situations
- ♦ Mounts to most I² devices
- ♦ Adds thermal capability
- ♦ Small and lightweight
- ♦ Extended operating time
- ♦ Attaches/detaches in seconds
- ♦ Simple and easy to use
- ♦ MIL-SPEC and battle-proven
- ♦ Minimal training required

Clip and Go Thermal Imaging for your NVD

The **COTI** easily attaches to existing Night Vision Devices (NVD's) to enhance/provide additional capabilities. Low power consumption, optimal sensor technology, and high-performance optics integrate seamlessly to provide state-of-the-art long-wave infrared technology.

Since **COTI** mounts on currently existing NVD's with a bracket, the clip-on technology allows increased capabilities without the need to refit helmets with special equipment.



Small and lightweight

The small and lightweight design consumes very little power providing extended use. Additionally, **COTI** being waterproof to 20 meters and with its rugged construction can withstand the harshest environments.

Adds thermal capability

When added to a standard I² system, **COTI** enables the user to detect thermal sources and improve situational awareness. Even in pitch-black, no-light, adverse environmental conditions, recognition range extends dramatically. With **COTI**, the user is even able to see into darkened openings and detect residual heat – situational awareness at the highest level.

COTI and Standard Issue NVD's

The **COTI** enhances the functionality of currently fielded NVD's by adding a thermal image overlay to the I² scene without modifying existing hardware.



Image intensified only (I²)



I² and thermal





Raymax CATS 24/7 Day or Night Motorized Zoom Lenses

The range of Raymax CATS lenses provide 24hrs **(day OR night)** operation **without refocussing** throughout the focal range.

There's no requirement to manually swap in & out IR filters &/or no longer having to operate tandem separate day & night camera/lens configurations.

- Super-Apochromat
- High resolution, High contrast

CATS 2000 24/7 Motorised Zoom Lens

- The capability to confirm a licence plate at 2km's
- The ability to locate a human/vehicle target at 13km's
- 100x (200x with extender magnification)
- 1/2" C 10-1000mm (20-2000mm w/2x extender)
- F4.0 - F256 / F8.0 - F512 (with 2x Ext.)
- Video AI with manual override iris
- Focus/Zoom motorised with presets
- includes lens controller



For more info including a video clip: [CLICK HERE](#)

CATS 1500 24/7 Motorised Zoom Lens

- 60x magnification (120x with extender magnification)
- 1/2" C 12.5-750 mm (25-1500mm w/2x extender)
- F4.5 - F360 / F9.0 - F720 (with 2x Ext.)
- includes lens controller



For more info: [CLICK HERE](#)

CATS 300 24/7 Motorised Zoom Lens

- 1/2" C 10-300mm
- 30x magnification
- F2.8 – F360
- includes lens controller



For more info: [CLICK HERE](#)



GPO Box 3366 Melbourne, 3001 ☎ 0411 244 969 📠 03 9885 1877
email: 1314profly@militaryandlaw.com.au



TIU2 Thermal Imaging Sensor

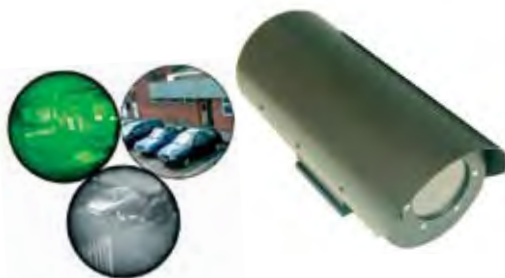


- Thermal Imaging Unit inc. Germanium objective lens with **remote focussing, packaged to IP66** complete with heater and plate for pan/tilt connection.
- Requiring 12V DC input, **can be incorporated with any CCTV system** via BNC out facility.
- **Available with the following objective lens configurations:**
 - 25mm F1 Germanium lens FOV 36° manual focus
 - 50mm F1 Germanium lens FOV 18° manual focus
 - 75mm F1 Germanium lens FOV 12° manual focus
 - 100mm F1 Germanium lens FOV 9° manual focus
 - 150mm F1 Germanium lens FOV 6° manual focus

For more info including video clip: [CLICK HERE](#)

- Triple sensor changeover **combines three technologies** (day time / low light / image intensified - night vision) **to provide the optimum single sensor for the prevailing conditions.**
- **Colour for day time surveillance** offering high resolution detail & long range identification.
- Selection of **infrared (IR) Enhanced Monochrome sensors extend day use to dusk and dawn & Intensified Night Vision facilitates the darkest part of the night.**
- Sensor/camera selection is conducted with end-user input and the system is designed to be compatible with existing or new standard CCTV equipment.
- System is lightweight and contained in a rugged IP67 environmental housing.

TRICAM 1500 Triple Sensor Day/Night Changeover Camera



For more info including video clip: [CLICK HERE](#)

Mini TIU Thermal CCTV/ Surveillance Camera

- Mini TIU is a **compact thermal-imaging camera designed for use in 24-hour surveillance systems where detection is essential.**
- Mini TIU **can be installed as part of a new or existing CCTV system** and is compatible with all ancillary equipment including receivers, multiplexers and pan and tilt systems.
- **IP66 rated.**

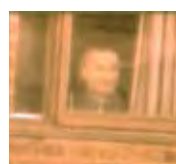
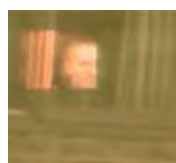
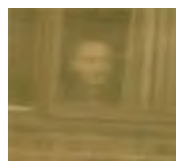


For more info including video clip: [CLICK HERE](#)



GPO Box 3366 Melbourne, 3001 ☎ 0411 244 969 📠 03 9885 1877
email: 1314profly@militaryandlaw.com.au

EV9 Image Enhancer



- **Simple operation** results in **highly effective image enhancement** with CCTV, II & TI in situations where the image is degraded due to fog, haze, smog, mist, rain & low light.
- The unit also **performs extremely well in enhancing images that are degraded due to over exposure** and where procured through scrim!
- **10 enhancement windows & line crispering feature.**
- Can be used **'in-line'** or else **highly effective in 'post production'....excellent results can be obtained via enhancement of a recorded image** (up to 5 times).
- Simple 12V input.
- **BNC input/output.**



For more info including video clip:

[CLICK HERE](#)

The MCC7 Miniature Colour High Resolution CCTV Camera is the **smallest diameter** (7-9mm), length (20mm) **CCD camera available today.**

With a range of **5x lenses & 5x cable** (Multicore) **lengths** up to 15m, the MCC7 is the ideal miniature covert colour CCTV system, ideally suited to all surveillance applications & requirements.

- The Control Box measures only **60mm x 52mm x 16mm!**
- The MCC7 provides **480TVL resolution**, resulting in truly unsurpassed image quality.
- Video output is PAL composite via BNC.

For more info including video clip:

[CLICK HERE](#)



MCC7 Miniature High Resolution Colour CCTV Camera



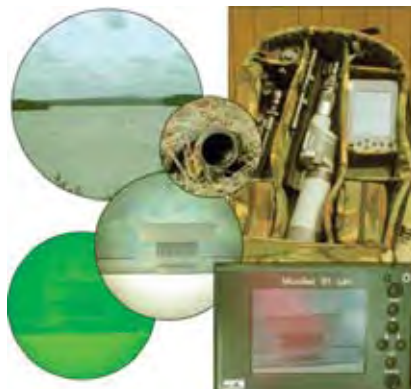
MILITARY & LAW

ENFORCEMENT TECHNOLOGIES®

"like nothing you've ever seen 84"®



GPO Box 3366 Melbourne, 3001 ☎ 0411 244 969 📠 03 9885 1877
email: 1314profly@militaryandlaw.com.au



PROMS - Portable Rapid Deployment Observation and Monitoring



PROMS is a **man portable, rapid deployment observation system** allowing **ultra long Surveillance Target Acquisition** utilising its combination of day or **night sensor** technology.

Capability:

- Colour video display up to 711x magnification
- Optional Night Vision Image Intensified video up to 519x magnification
- Optional naked eye Night Vision Image Intensified observation up to 253x magnification

Features:

- * Able to monitor and record target information away from sensor platform
- * Rapid deployable - man portable (20kg approx.)
- * Long Range High Magnification
- * All equipment is self-contained with its own webbing back pack
- * Provides Extra Security & Stand Off for Operators

PROMS is man portable and can be rapidly deployed within a few minutes.

PROMS provides ultra long Surveillance Target Acquisition utilising its combination of day or night sensor technology.

PROMS provides much larger magnification than standard commercially available spotting scopes in service today.

With its unique remote monitoring system, surveillance operators are able to monitor & record information observed from the target area well away from where the sensor platform is deployed.

This allows operators to work in complete safety and allows the use of multiple observers without compromising the position of the sensor platform.

Operation:

Simply find a location, set up the scope and tripod, connect the battery & monitor and images will be relayed in live video to the waterproof LCD monitor base station up to 90 meters away.

Use the coarse adjustment along with the finders scope to get close, then target precisely using the fine vertical and horizontal knobs. Further zooming or extra magnification is then available.

Available with microwave transmission as an option for the LCD monitor / sensor platform with distances of up to 1KM (line of sight) and fibre optic transmission over several kilometres if required.

Sensor platform quick release from low profile tripod and attaches to any full size tripod with world standard 1/4" UNC thread while maintaining full use of the special coarse / fine pan & tilt head.

For more info including 3x video clips:

[CLICK HERE](#)